

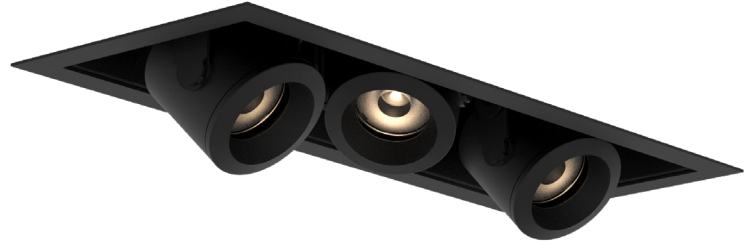
LUMENTURE®









RM65P RECESSED MULTIPLES

TYPE: _____

PROJECT: _____

With a 5" aperture, knife-edge trim and excellent visual cutoff - Lumenture's RM65P refines the recessed multiple. The recessed modules deliver up to 1600 lumens per head, where you want it and without glare - including the ability to pull down the modules below the ceiling plane for ultimate flexibility. The RM65P ships standard with new construction Non-IC-rated housings.



							
DIMMING Triac, ELV, 0-10V, DALI & LEDcode	WATTAGE up to 18W per head	EFFICACY up to 88lm per watt	AC DRIVER INPUT 120-277V	HOUSING Closed, Non-IC-Rated	FINISH Aluminum module & trim, Powdercoat or anodized	ACCESSORIES EM Pack, lenses & louvres (pg 4)	MOVEMENT 60° tilt 360° rotation 2" pull-down

ORDERING

FIXTURE	MODULE	CCT/CRI ^{1,2}	BEAM SPREAD ²	INTERIOR COLOR ¹	TRIM/GIMBAL COLOR ¹	DRIVER	OUTPUT (mA) ¹	HOUSING ³	
RM65P	1 - 1 Module	22H - 2200K, CRI 90+	15 - 15°	B - Black	B - Black	U - Universal Dimming Driver (Triac, ELV & 0-10V)	400 - 1 Module, 17W, 1500 lumens	C - Closed, Non-IC-Rated	
	2 - 2 Modules	27H - 2700K, CRI 90+	25 - 25°	S - Silver	S - Silver				2 Modules, 34W, 3000 lumens
	3 - 3 Modules	30H - 3000K, CRI 90+	40 - 40°	W - White	W - White				3 Modules, 51W, 4500 lumens
	4 - 4 Modules	30B - 3000K, CRI 95+	60 - 60°						4 Modules, 68W, 6000 lumens
	4S - 4 Square	30D - 3000K, CRI 90+, Dim-to-Warm							4 Square, 68W, 6000 lumens
		35H - 3500K, CRI 90+							
	40H - 4000K, CRI 90+								

NOTES

1. Custom options available. Please consult factory.
2. For mixed beam angles or CCT, please consult factory.
3. Optional butterfly brackets available. See accessories on page (4).
Butterfly brackets and factory installed brackets are required for acoustical ceiling tile (ACT ceilings).

ORDERING EXAMPLE:

RM65P - 2 - 30H - 25 - B - B - U - 400 - C

LISTINGS

Certified to UL standard 1598 and CSA C22.2 No. 250.0-08 for damp locations. Lithonia LEM08 emergency driver is CEC Title 20 compliant.



RM65P RECESSED MULTIPLES

PHOTOMETRICS

LUMEN OUTPUT

Values fluctuate based on CCT and CRI. To estimate delivered lumen output of various CCT/CRI options, multiply nominal lumens by the multiplier below.

FIXTURE	WATTAGE	NOMINAL LUMENS
RM65P-1	17W	1500 lumens
RM65P-2	34W	3000 lumens
RM65P-3	51W	4500 lumens
RM65P-4	68W	6000 lumens
RM65P-4S	68W	6000 lumens

CODE	CCT	CRI	TECHNOLOGY	15°	25°	40°	60°
22H	2200K	90+	Standard	0.65	0.75	0.75	0.70
27H	2700K	90+	Standard	0.75	0.90	0.90	0.80
30H	3000K	90+	Standard	0.80	0.95	0.95	0.85
30B	3000K	95+	Standard	0.65	0.80	0.80	0.70
30D	3000K	90+	Dim-to-Warm	N/A	0.70	0.70	0.65
35H	3500K	90+	Standard	0.80	1.00	1.00	0.90
40H	4000K	90+	Standard	0.80	1.00	1.00	0.90

Luminaire maintains a lumen output tolerance of +/-7.5%

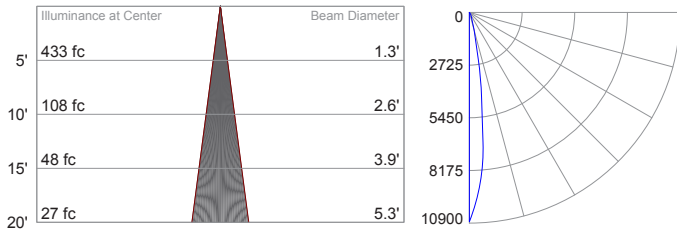
**Dim-to-Warm dims from 3000K to 1800K

OUTPUT

Output below is per head @400mA.

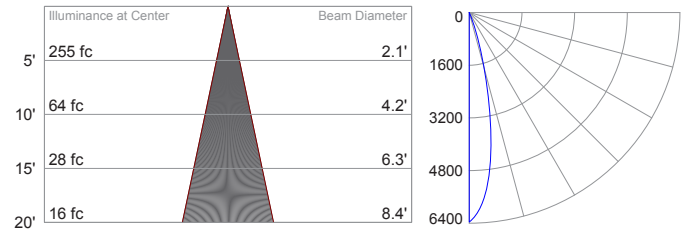
RM65P - 15 Degree

Delivered Light Output: 1200 Lumens
 Total Watts @120V: 18;
 Lumens Per Watt: 67
 Center Beam Candle Power: 10830



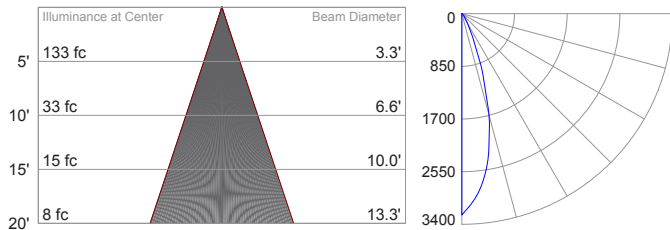
RM65P - 25 Degree

Delivered Light Output: 1400 Lumens
 Total Watts @120V: 17;
 Lumens Per Watt: 83
 Center Beam Candle Power: 6370



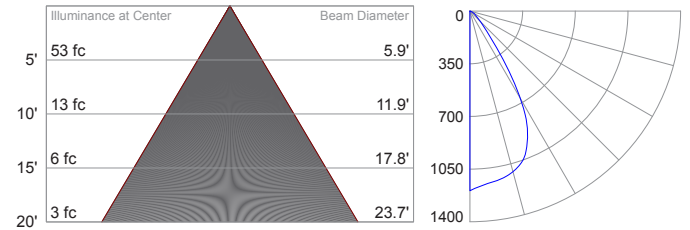
RM65P - 40 Degree

Delivered Light Output: 1400 Lumens
 Total Watts @120V: 17;
 Lumens Per Watt: 82
 Center Beam Candle Power: 3250



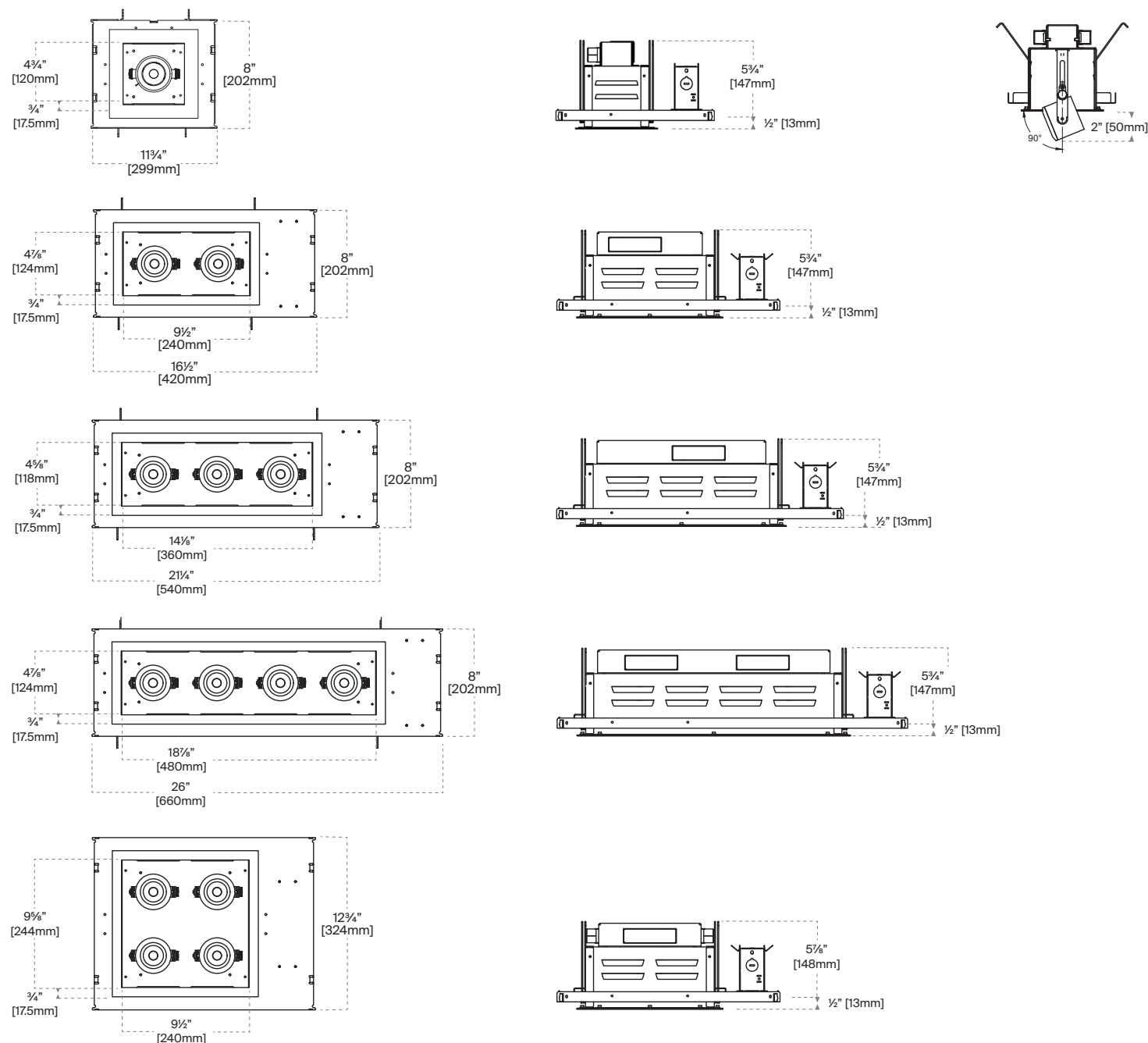
RM65P - 60 Degree

Delivered Light Output: 1300 Lumens
 Total Watts @120V: 17;
 Lumens Per Watt: 76
 Center Beam Candle Power: 1200



RM65P RECESSED MULTIPLES

DIMENSIONS



NOTE:

1. Maximum ceiling thickness is 1.75"
1. Cutout Dimensions - 1 Module (5 3/4" x 5 3/4"), 2 Module (10 1/2" x 5 3/4"), 3 Module (15 1/4" x 5 3/4"), 4 Module (19 7/8" x 5 3/4"), 4 Square Module (10 1/2" x 10 1/2").

RM65P RECESSED MULTIPLES

DIMMING


Dimming is standard and allows for smooth illumination below 0.1% with certain dimmer/driver combinations. The “U” (Universal) driver dims to 1%, accepts 120-277V AC Input and is compatible with 0-10V, Triac (forward phase) and ELV (reverse phase) dimmers. For dimmer compatibility, refer to the Dimming Compatibility document on our website.

ACCESSORIES

LENS ACCESSORIES

 **Lens-Yellow-50**

 **Lens-Green-50**

 **Lens-Blue-50**
(Light Blue)


 **Lens-Red-50**

 **Lens-Rose-50**

 **HL-50**
(Black Honeycomb Louver)

 **LS-50**
(Linear Spread)


 **SOL-50**
(Solite)

 **CB-50**
(Black Cross Baffle)

 **CR-50**
(Concentric Ring Baffle)

BUTTERFLY BRACKET KIT

Butterfly brackets and factory installed brackets are required for acoustical ceiling tile (ACT) ceilings.

 **1254K**
(Contains two (2) butterfly brackets and two (2) wing nuts)